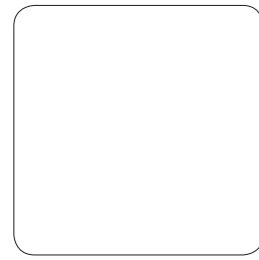


POLIPROPILENE/polypropylene

Polipropilene trattato anti-UV e colorato in massa. Riciclabile al 100%
Polypropylene with UV additives and is uniformly colored. 100% Recyclable resin.

POLIPROPILENE FIBERGLASS/polypropylene fiberglass

Polipropilene fiberglass trattato anti-UV e colorato in massa. Resina riciclabile al 100%.
Uniformly colored fiberglass polypropylene resins with uv additives. 100% Recyclable resin.



BIANCO .00



GRIGIO .03



ANTRACITE .02



BURRO .28



TORTORA .10



AVANA .33



CAFFE' .05



CELESTE .39



SALICE .04



LIME .12



SENAPE .56



CORALLO .75



ROSSO .07

TESSUTO ACRILICO/acrylic fabric

Fibra Acrilica 100% tinta in massa. Solidità alla luce 7/8. Sfoderabile/zip, lavabile a 30°. Trattamento antimacchia, antimuffa.

100% acrylic fiber mass dyed. Light fastness 7/8. Removeable/zip, washable at 30°. Stain-proof, mould-proof.



bianco .155
190 gr/m²



grigio .163
240 gr/m²



grey stone .064
240 gr/m²



caffè .165
190 gr/m²



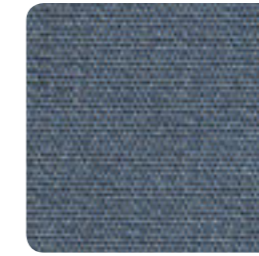
the verde .071
240 gr/m²



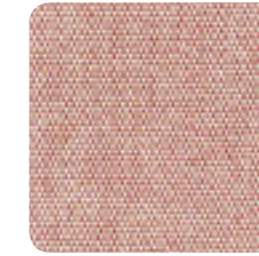
lime .061
240 gr/m²



sardinia .072
240 gr/m²



denim .070
240 gr/m²



rosa quarzo .066
240 gr/m²



senape .069
240 gr/m²



cherry .065
240 gr/m²



melanzana .068
190 gr/m²

TESSUTO ACRILICO STAMPATO / acrylic fabric with digital print

Fibra Acrilica 100% stampa digitale. Solidità alla luce 6. Sfoderabile/zip, lavabile a 30°.

100% acrylic fiber with digital print. Light fastness 6. Removeable/zip, wash at 30°.



CUSCINO PASSPARTOUT



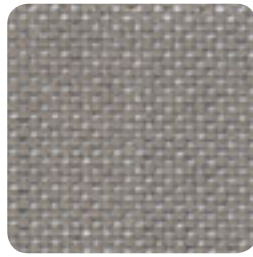
tropical .081
190 gr/m²

TESSUTO ACRILICO Sunbrella® NATTÈ/ Sunbrella® NATTÈ acrylic fabric



100% fibra acrilica SUNBRELLA® tinta in massa, con trattamento CLEANGARD® idrorepellente e anti-macchia. Solidità alla luce 8/8. Sfoderabile con ZIP, lavabile a 40°.

100% acrylic SUNBRELLA® fibre, batch dyed, with CLEANGARD® water-repellent and stain-resistant treatment. 8/8 light fastness. Removable cover with ZIP fastening, washable at 40°.



grigio Sunbrella® .136
280 gr/m²

TESSUTO ACRILICO CUSCINO EDEN /acrylic fabric eden cushion

Fibra Acrilica 100%. Solidità alla luce 7/8. Sfoderabile/zip, lavabile a 30°. imbottitura: poliuretano espanso. Densità 18 kg/m³. Trattamento con resina poliuretano/acrilica, idrorepellente.

100% acrylic fiber. Light fastness 7/8. Removeable/zip, wash at 30°. Padding: polyurethane foam. Density 18 kg/m³. Finish resin poliuretano/acrilic, water-repellent



ecru .160



blu .076

IMBOTTITURA / padding

CUSCINO NET BENCH - NET RELAX - NET - SEDUTA ARIA - FIT ARIA - ACQUAMARINA - DARSENA

Poliuretano espanso. Polyurethane foam.

CUSCINO SHELL

Poliuretano espanso su struttura rigida di polipropilene. Polyurethane foam over solid polypropylene frame.

CUSCINO ARREDO ARIA

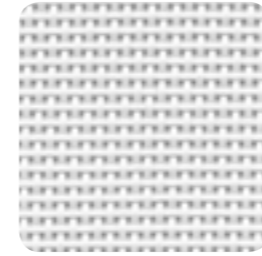
Poliuretano espanso rivestito da fibra poliestere. Polyurethane foam with polyester fiber.

CUSCINO PASSPARTOUT

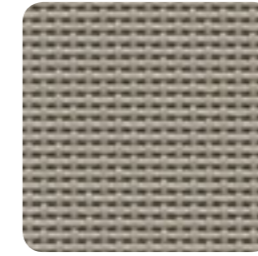
Fibra di poliestere. Polyester fiber.

TESSUTO SINTETICO/synthetic fabric

Tessuto in filo di poliestere rivestito in pvc. Fabric is made of a polyester fiber, with a pvc coating.



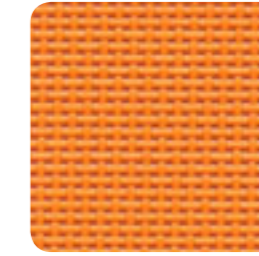
bianco .107
tela 1x1



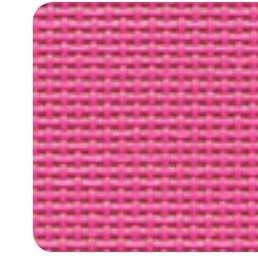
tortora .104
tela 1x1



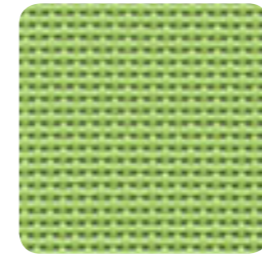
antracite .057
tela 1x1



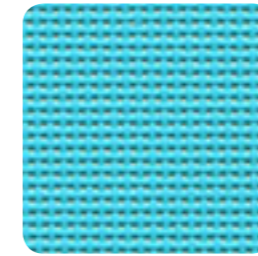
mandarino .083
tela 1x1



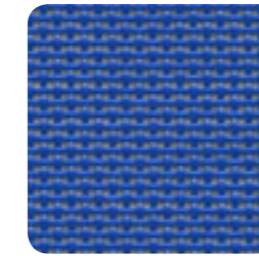
rosa .056
tela 1x1



prato .084
tela 1x1



celeste .075
tela 1x1



blu .102
tela 1x1



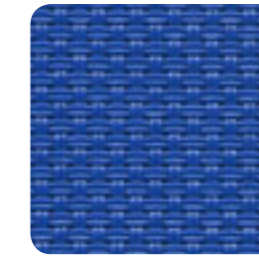
bianco .108
tela 2x2



beige .115
tela 2x2



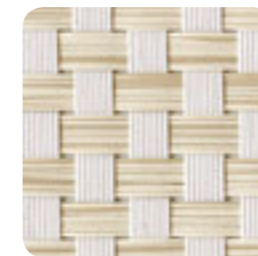
tortora .124
tela 2x2



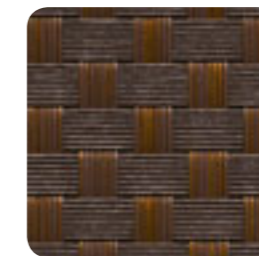
blu .112
tela 2x2



trama bianco .121



trama beige .078



trama caffè .117



trama antracite .116

ALLUMINIO/aluminium

ALLUMINIO ANODIZZATO/aluminium anodized

L'anodizzazione è un processo elettrolitico che aumenta l'ossidazione delle superfici prevenendo la corrosione con uno strato protettivo.

Anodizing is an electrolytic procedure that increases oxidation of the surfaces, preventing corrosion with a protective layer.

ALLUMINIO VERNICIATO/coated aluminium

La verniciatura è a polvere di poliestere.

The painting is with polyester powder.

ALLUMINIO VERNICIATO TRATTAMENTO SPECIALE/ coated aluminium special treatment

Alluminio con trattamento speciale per ambienti ad alto tasso salino.

Aluminium special treatment for high salinity environments.



verniciato bianco .53



verniciato argento .54



verniciato antracite .52



verniciato burro .58



verniciato tortora .59



verniciato caffè' .57



anodizzato .50

LAMINATO HPL/laminate HPL

Laminato decorativo ad alta pressione, compatto, omogeneo, non poroso, ad alta densità.

Decorative high pressure laminate, solid, homogeneous, non-porous and with a high density.



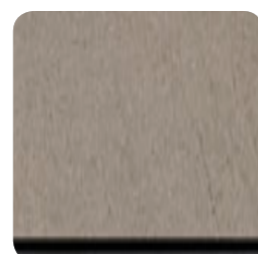
BIANCO .301



GRIGIO .300



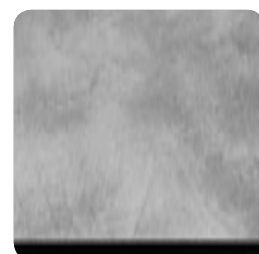
ANTRACITE .303



TORTORA .310



CAFFÈ .302



CEMENTO .305



LEGNO .311

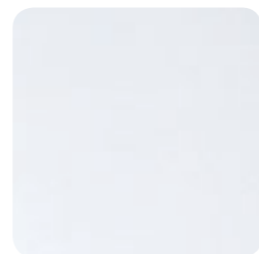


CORTEN .312

WERZALIT-TOPALIT/werzalit-topalit

Piano speciale protetto da laminato melamminico decorato, di facile pulizia, resistente alle macchie, al calore, alle intemperie.

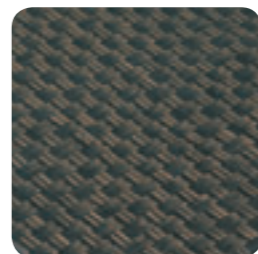
Werzalit-topalit tops are protected by a special printed foil that is weather proof, easy to clean and resistant to marks and heat.



BIANCO .190



ARGENTO .197



WICKER .198

VETRO/glass

Vetro float temperato serigrafato e vetrificato a 700°C.

Tempered Float glass, screen-printed and vitrified at 700° C.



BIANCO .00



ANTRACITE .02

DURELTOP

DurelTOP è un sistema innovativo di produzione di piani per tavoli studiati per raggiungere i più elevati livelli di praticità, resistenza, robustezza ed eleganza. I piani DurelTOP sono ad alto spessore, formati da un doppio strato tamburato perfettamente chiuso. Prodotti in polipropilene di prima qualità, sono inalterabili all'acqua, resistenti al sole e facili da pulire. DurelTOP è il risultato di una lunga ricerca tecnologica e dell'esperienza decennale nella lavorazione delle materie plastiche della Nardi, da sempre all'avanguardia nell'ambiente contract e giardino.

The DurelTOP is an innovative new system in the production of tabletops developed to reach the highest levels of practicality, resistance, and elegance. The DurelTOP tabletops have a greater thickness, formed by a double layer enclosure perfectly closed. Produced in first quality polypropylene, they are resistant to water, resistant to sunlight, and are easy to clean. DurelTOP is a result of a decade's long research and development in plastics by Nardi, always a leader in the contract and garden sectors.

nardi
DurelTOP